

WARNING:

WARNING - Risk of fire or electric shock. LED Retrofit Kit installation requires knowledge of luminaires electrical systems. If not qualified, do not attempt installation. Contact a qualified electrician.

AVERTISSEMENT - Risque d'incendie ou de choc électrique. Installation du kit de Retrofit LED exige une connaissance des systèmes électriques luminaires. Si vous n'êtes pas qualifié, ne tentez pas de l'installation. Contactez un électricien qualifié.

WARNING - Risk of fire or electric shock. Install this kit only in the luminaires that have the construction features and dimensions shown in the photographs and/or drawings and where the input rating of the retrofit kit does not exceed the input rating of the luminaire.

AVERTISSEMENT - Risque d'incendie ou de choc électrique. Installez ce kit dans les luminaires qui ont les caractéristiques de construction et les dimensions indiquées dans les photographies et / ou dessins et où la cote d'entrée du kit de modification ne dépasse pas la capacité d'entrée du luminaire.

Do not make or alter any open holes in an enclosure of wiring or electrical components during kit installation.

Ne pas agrandir ou modifier les trous ouverts au sein du câblage ou sur les composants électriques lors de l'installation du kit.

WARNING -To prevent wiring damage or abrasion, do not expose wiring to edges of sheet metal or other sharp objects.

AVERTISSEMENT - Pour éviter d'endommager le câblage ou à l'abrasion, ne pas exposer le câblage aux bords de tôle ou d'autres objets pointus.

Installers should not disconnect existing wires from lamp holder terminals to make new connections at lamp holder terminals. Instead installers should cut existing lamp holder leads away from the lamp holder and make new electrical connections to lamp holder lead wires by employing applicable connectors.

Les installateurs ne doivent pas débrancher les câbles existants de terminaux de support de lampe pour faire de nouvelles connexions dans les douilles. Au lieu installateurs doivent couper les câbles existants de terminaux de support de lampe et faire de nouvelles connexions électriques en utilisant des connecteurs applicables.

THE RETROFIT ASSEMBLY IS ACCEPTED AS A COMPONENT OF A LUMINAIRE WHERE THE SUITABILITY OF THE COMBINATION SHALL BE DETERMINED BY UL OR AUTHORITIES HAVING JURISDICTION.

LE MONTAGE DU RETROFIT EST ACCEPTÉE COMME COMPOSANT D'UN LUMINAIRE OÙ LA PERTINENCE DE LA COMBINAISON SERA DÉTERMINÉE PAR L'UL OU LES AUTORITÉS AYANT LA JURIDICTION CORRESPONDANTE.

THERE ARE LED TUBE, OPERATION INSTRUCTION AND FIELD APPLIED LABEL IN THIS RETROFIT KIT.

Installers should examine all parts that are not intended to be replaced by the retrofit kit for damage and replace any damaged parts prior to installation of the retrofit kit.

sunlite®

INSTALLATION INSTRUCTIONS

88043-SU T8/LED/HY/2'/10W/3SCT/G2

88044-SU T8/LED/HY/3'/12W/3SCT/G2

88045-SU T8/LED/HY/4'/12.5W/3SCT/G2

LED "Type A+B LAMP"
Double Ended By Pass/Line Voltage



COLOR TUNABLE SWITCH
3500K 4000K 5000K

Please read and understand this entire manual before attempting to assemble, operate or install the product.



WARNINGS & CAUTIONS: Risk of fire or electric shock, avoid fire or electric shock. **Turn off the power at fuse or circuit breaker box before installation and maintenance to avoid electric shock. Make sure correct connection before power on.** Before installation thoroughly review enclosed installation manual. Suitable for 120-277 Volt fused circuits. **This product must be installed in accordance with the applicable installation code by a person familiar with the construction and operation of the product and the hazards involved.** If you do not have sufficient electrical wiring experience, please consult a qualified electrician. Consult a qualified electrician to ensure correct branch circuit conductor. Do not make or alter any open holes in an enclosure of wiring or electrical components during installation. **Please wear gloves to avoid injury before installation.** If the product is damaged, do not attempt installation and do not use. NOT FOR EMERGENCY LIGHTING. Please use listed water proof strain relief bushing when connecting the supply cord to the outlet box. Operating temperature -20°C - 45°C (-4°F - 113°F). Suitable for damp locations.

This device complies with part 15 of the FCC Rules. Operation is subject to the following two conditions: (1) this device may not cause harmful interference, and (2) this device must accept any interference received, including that may cause undesired operation.

Retain these instructions for future reference.

V2022a

PARTS / COMPONENTS INCLUDED IN KIT

- LED Lamp: LED tube with Fa8 Base
- Installation Instructions
- Luminaire Marking Labels. *Only for Type A+B installation please apply the following lamp replacement label on the retrofit luminaire after the retrofit kit has been installed, where readily visible by the user during relamping, and after installation.*

Sunshine Lighting Company

744 Clinton Street Brooklyn, NY 11231, USA

T. 718.768.7000

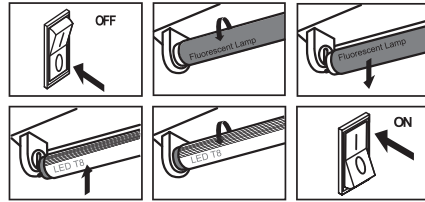
F. 718.768.0970

www.sunlite.com

Install Instruction

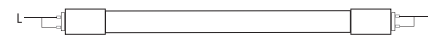
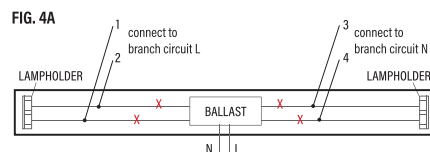
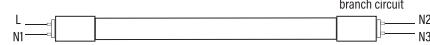
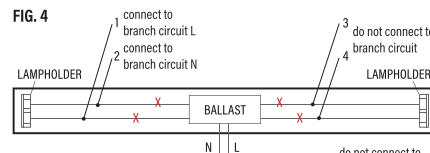
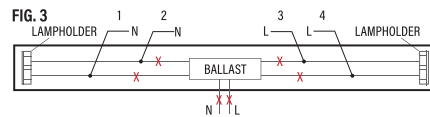
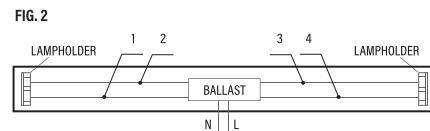
Mode 1 - Direct Replacement

1. Turn Power off.
2. Remove lens or diffuser (if applicable).
3. Remove existing fluorescent lamp from the luminaire.
4. Install the LED replacement lamp (one for each fluorescent lamp).
5. Replace lens or diffuser back in place (if applicable)
6. Turn Power on.



Mode 2 - By-Pass

1. Remove existing fluorescent tube(s), diffuser (if applicable) and open the ballast cover.
2. Disconnect luminaire supply wirings Land N to branch circuit. **FIG. 1.**
3. Cut lampholder leads "1, 2, 3, 4, L, N" then check whether the lamp holder is shunted. **FIG. 2.**
4. Check the lamp holders, If the lamp holders are shunted, go to Step 5. If the lamp holders are not shunted, go to Step 7.
5. Connect one lead from each lampholder to branch circuit as follows, "Leads 3 and 4" connected to L; "Leads 1 and 2" connected to N. **FIG. 3.**
6. For "One End" wiring, connect one lead from each lampholder to branch circuit as follows, "Leads 1' connected to L; "Leads 2" connected to N. **FIG. 4.** For "Both Ends" wiring, connect one lead from each lampholder to branch circuit as follows, "Leads 1 and Leads 2 connected to L; "Leads 3 and Leads 4' connected to N. **FIG. 4A.**
7. Attach the field applied label to the luminaire. Install ballast cover and diffuser back on luminaire, and T8 LED tube. **FIG. 5**



Install Instruction (cont.)

Mode 3 - By-Pass Magnetic Ballast

1. Repeat steps 1 and 2 from **Mode 2.**
2. Cut lamp holder leads "1, 2, 3, 4, Cut as far away from the lampholders to allow for longer lengths of wire at both lampholders. **FIG. 6.**
3. For "One End" wiring, connect one lead from each lampholder to branch circuit as follows, "Leads 1" connected to L; "Leads 2" connected to N. **FIG. 7.** For "Both Ends" wiring, connect one lead from each lampholder to branch circuit as follows, "Leads 1 and Leads 2 connected to L; "Leads 3 and Leads 4' connected to N. **FIG. 7A.**
4. Repeat step 7 from **Mode 2.**

