

## INSTALLATION INSTRUCTIONS

### LED VANITY FIXTURE

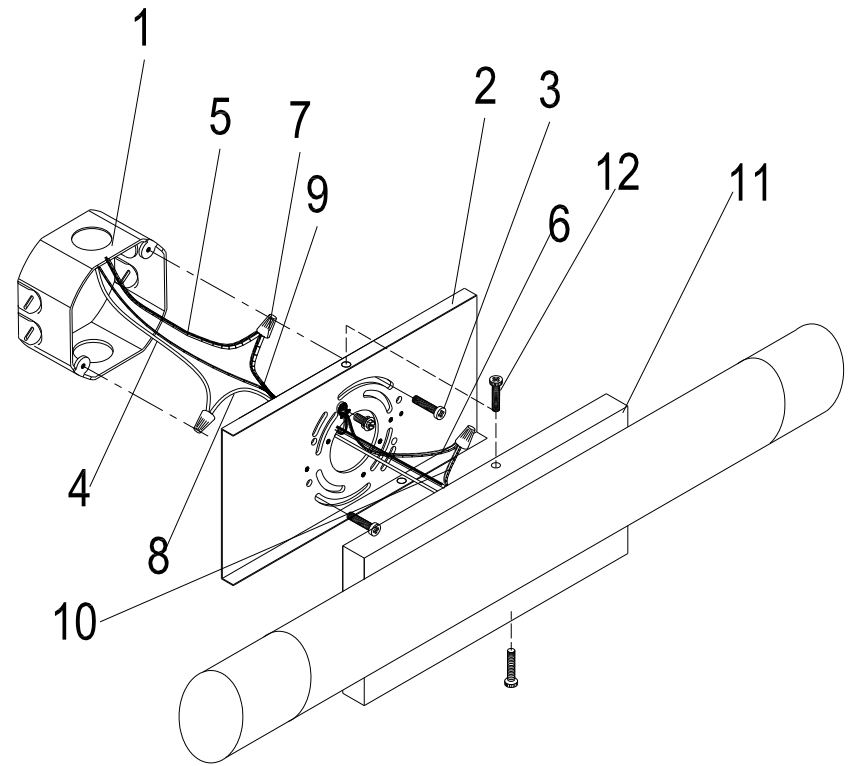
120VAC/60Hz Input, Dimmable

### READ AND FOLLOW SAFETY INFORMATION

**CAUTION** - Turn off the main power at the circuit breaker before installing and servicing the fixture to prevent possible injury from electric shock. All electrical connections must be in accordance with local and National Electrical Code (N.E.C.) standards. If you are unfamiliar with proper electrical wiring connections, obtain the services of a qualified electrician.

### INSTALLATION & ASSEMBLY

1. Pull the power supply wires out from the outlet box (1). Attach the mounting backplate(2) to the outlet box using two mounting screws (3).
2. Make wire connections, connect the black supply wire (5) to black fixture wire (11), white supply wire (4) to white fixture wire(10) and the fixture ground wire(12) to supply ground wire(6) using wire nuts (7). Wrap all wire connections with electrical tape for secure connection.
3. Place the pan base (11) of the lamp over the mounting backplate(2). Insert the fixture pan screws (12) and tighten to secure the lamp to the ceiling.
4. Install light bulbs (NOT included), DO NOT exceed wattage maximum as indicated on the rating label.



- |                              |                         |
|------------------------------|-------------------------|
| 1. OUTLET BOX (NOT INCLUDED) | 7. WIRE NUT             |
| 2. MOUNTING SCREW            | 8. WHITE FIXTURE WIRE   |
| 3. MOUNTING BRACKET          | 9. BLACK FIXTURE WIRE   |
| 4. WHITE SUPPLY WIRE         | 10. FIXTURE GROUND WIRE |
| 5. BLACK SUPPLY WIRE         | 11. CEILING PAN         |
| 6. SUPPLY GROUND WIRE        | 12. SCREW               |