

# LED Back-Lit Flat Panel Fixture

More Energy Efficient, Less Expensive



**10%** More Efficient Than LED Edge-Lit Panel or **70%** Fluorescent Tube Fixture



**110°** Beam Angle, Light Is More Directional (Provide Smooth and Even Lighting Distribution)



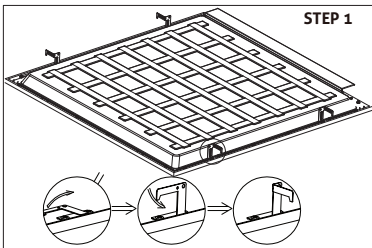
**50,000** Hours Lifespan (Instant Bright Light and No Buzzing or Flickering)



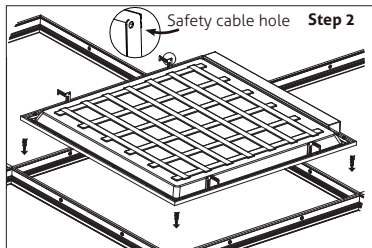
**Recessed Mounting**



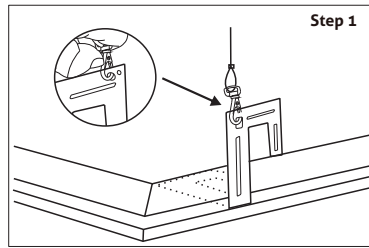
**Suspension Mounting**



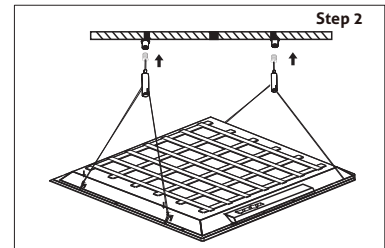
Lift up four mounting clips on the sides of the luminaire.



Insert luminaire into T-bar ceiling grid. Secure safety cable to connection hole.



Lift the mounting clip on the edge of panel, lock the suspension cable to the clip.



Adjust the cable length to meet the height requirements and connect cable to the ceiling.

	Item#	Description	Watt	Color	Lumens	Hours	W	H	D	Dimmable
2FT X 2FT	85490-SU	LFX/2X2/B-L/40W/40K/D/MV/4PK	40	4000K	4440	50000	23.74"	23.74"	1.61"	0-10v
	85491-SU	LFX/2X2/B-L/40W/50K/D/MV/4PK	40	5000K	4480	50000	23.74"	23.74"	1.61"	0-10v
	85494-SU	LFX/2X2/B-L/40W/65K/D/MV/4PK	40	6500K	4240	50000	23.74"	23.74"	1.61"	0-10v
2FT X 4FT	85496-SU	LFX/2X4/B-L/50W/40K/D/MV/4PK	50	4000K	5600	50000	23.74"	47.76"	1.61"	0-10v
	85497-SU	LFX/2X4/B-L/50W/50K/D/MV/4PK	50	5000K	5600	50000	23.74"	47.76"	1.61"	0-10v
	85498-SU	LFX/2X4/B-L/50W/65K/D/MV/4PK	50	6500K	5500	50000	23.74"	47.76"	1.61"	0-10v

